

## Edogawa Garage Club

### Tokyo, Japan

Ribbons of wave-like perforated steel form a mask, like an outer skin for this old warehouse. Colour variations highlighted by light changes produce unexpected chequered patterns as well as silver and gold toning at dawn and dusk, emphasising the façade's versatile nature.

This is a design for the re-use of an old warehouse in Tokyo. The following issues were addressed when making the design.

1. The environment: to avoid the CO<sub>2</sub> discharge that demolition and rebuilding would have caused, the existing structure was retained.
2. The character of the site: an attempt was made to create a design which would reflect and enhance the context which is a riverside site in Tokyo.

In order to protect the building from external damage caused by over-excited spectators and to ensure a reasonable internal light level from the existing windows, the entire exterior was clad with a skin of perforated stainless steel panels, with holes made using a special process.

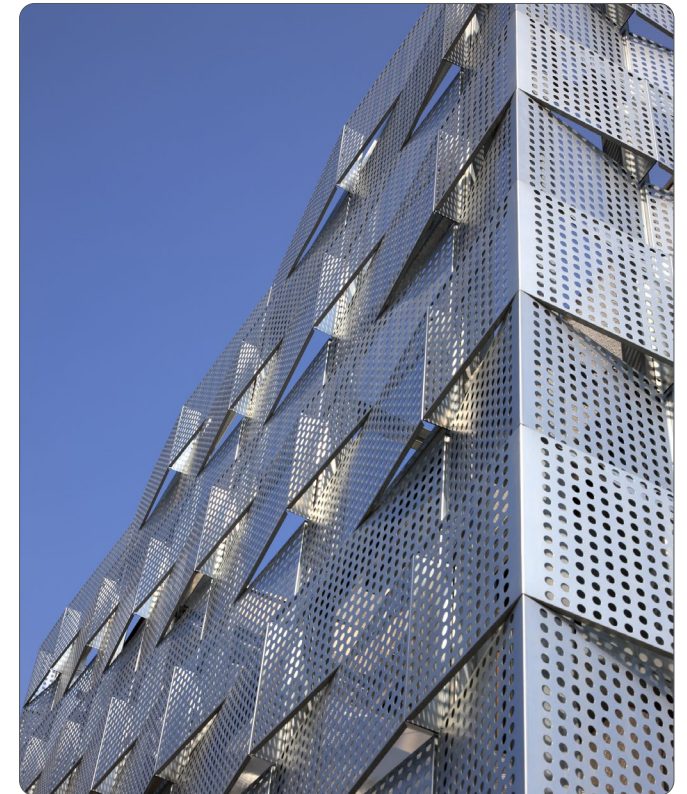
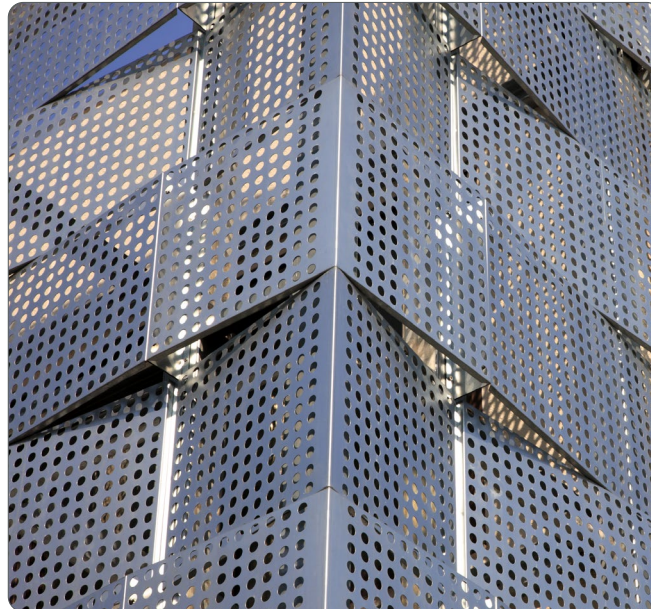
Structural strength is secured by slightly angling the panels, creating an overall undulating chequerboard effect.

Moreover the undulations are staggered from course to course, to help prevent staining and rain damage. Special corner panels bent at right angles provide

added stability.

This design responds sensitively to the ever-changing features of the natural environment, such as the colour of the sky, the intensity of the light and the movement of clouds, which are reflected in its surface like the ripples on the water of the nearby river.

The aim is to create an architecture that catches the subtle changes in Nature which has been submerged by the city.



Environment:	urban
Material:	stainless steel
Manufacturer:	EROOF
Architects:	Jun'ichi Ito + Jun'ichi Ito Architect & Associates
Photographs:	Naomi Kurozumi
More information:	ito-jun.com

